

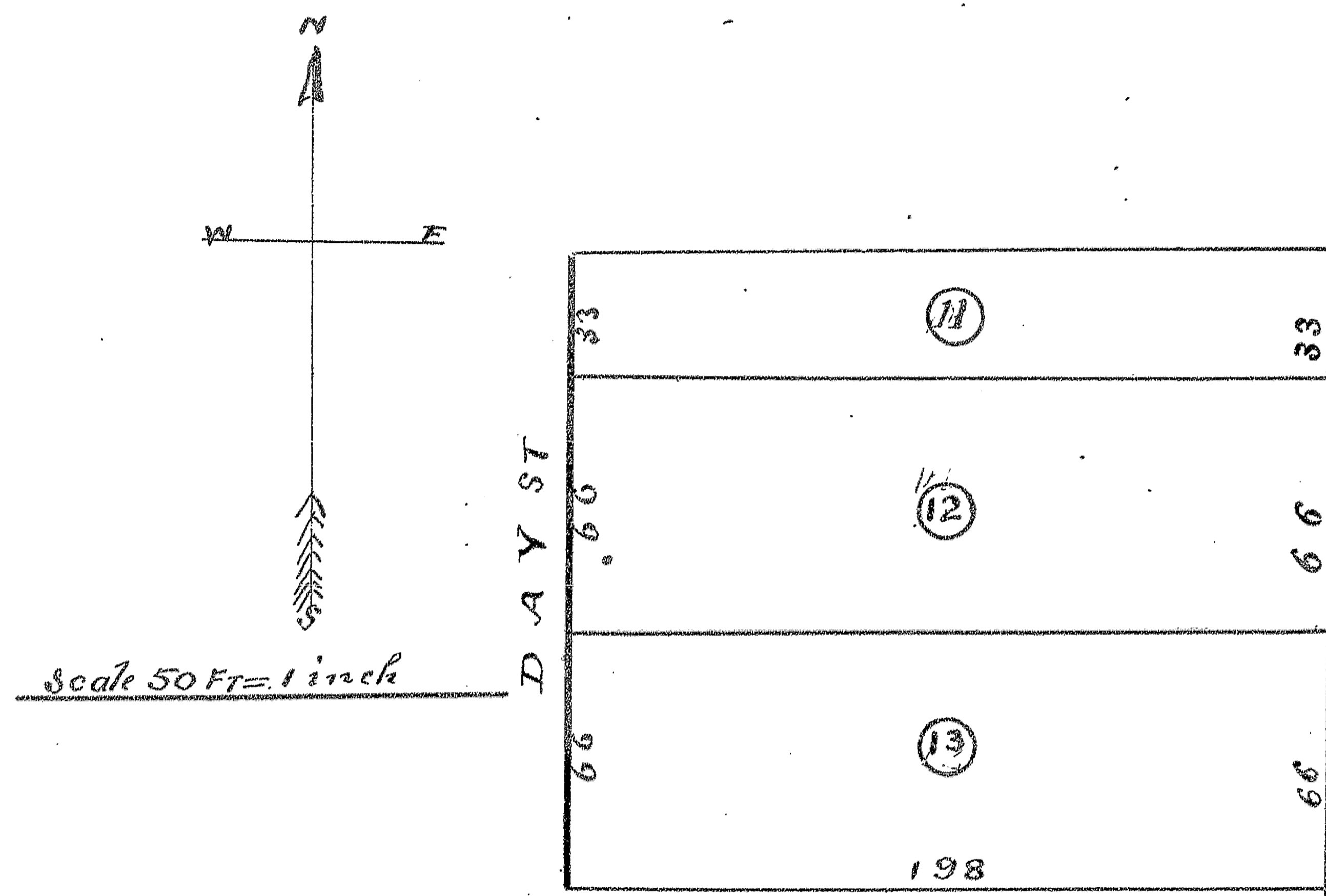
No. 183322

FILED FOR RECORD MARCH 31ST, A. D. 1904, AT 5 O'CLOCK P. M.

REVENUE PLAT 1904

—OF—

A SUBDIVISION OF LOT 7 OF SUBDIVISION
OF BLOCK A OF FIRST SOUTHERN ADDITION
TO GALESBURG KNOX CO. ILLINOIS



STATE OF ILLINOIS, }
 Knox County, } ss. I, C. S. RICHEY, County Surveyor of said Knox County, do hereby certify that
 the foregoing and annexed is a true and correct Plat and description of Lands advertised for Survey and Platting
 by the County Clerk, as taken from the records of Knox County, and by measurements and survey, as provided for
 in Sections 62 and 63, Chapter 120, Revised Statutes of Illinois, 1903.

Dated this 29th day of March, 1904.

C. S. RICHEY, County Surveyor.

Approved by me, this 29th day of March, 1904.

FRANK L. ADAMS, County Clerk.

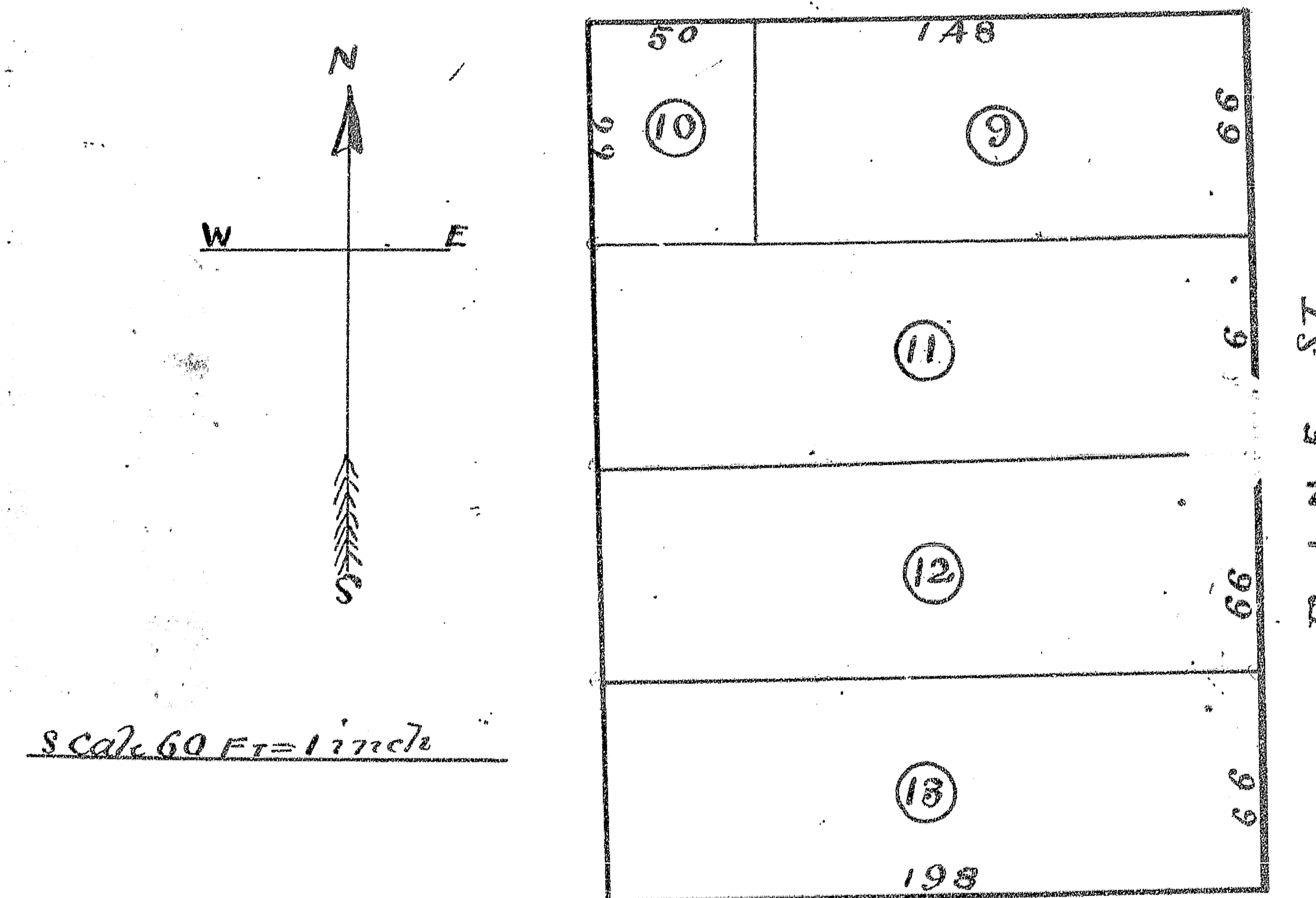
No. 183323

FILED FOR RECORD MARCH 31ST, A. D. 1904, AT 5 O'CLOCK P. M.

REVENUE PLAT 1904

—OF—

A SUBDIVISION OF LOTS 7 & 8 BLOCK B
OF FIRST SOUTHERN ADDITION
TO GALESBURG KNOX COUNTY ILL.



STATE OF ILLINOIS, }
 Knox County, } ss. I, C. S. RICHEY, County Surveyor of said Knox County, do hereby certify that
 the foregoing and annexed is a true and correct Plat and description of Lands advertised for Survey and Platting
 by the County Clerk, as taken from the records of Knox County, and by measurements and survey, as provided for
 in Sections 62 and 63, Chapter 120, Revised Statutes of Illinois, 1903.

Dated this 29th day of March, 1904.

C. S. RICHEY, County Surveyor.

Approved by me, this 29th day of March, 1904.

FRANK L. ADAMS, County Clerk.